

****IMPORTANT****

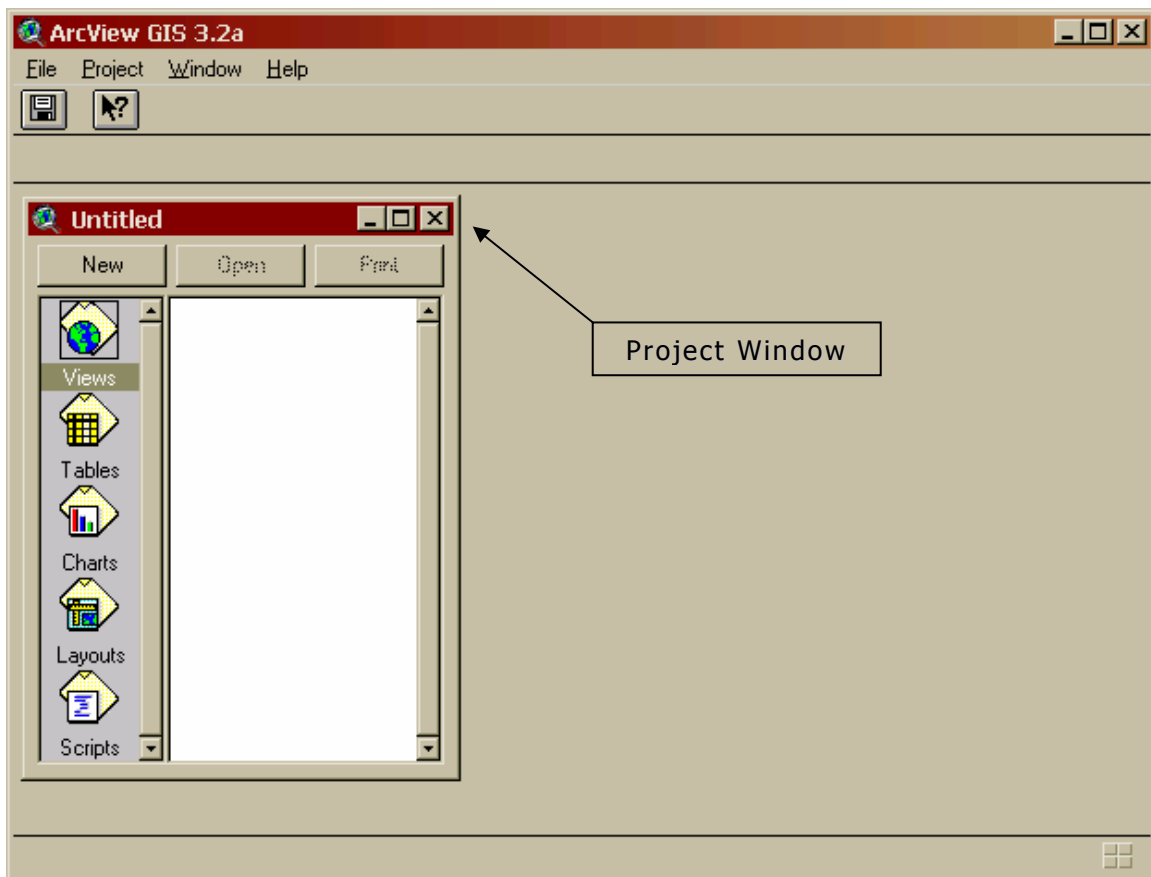
Your file and directory names should not contain spaces. Otherwise, the utility will NOT copy these files and will result in an incomplete project file in the output directory. If this will be an issue, refer to the "Project File Organizer" utility.

Installation

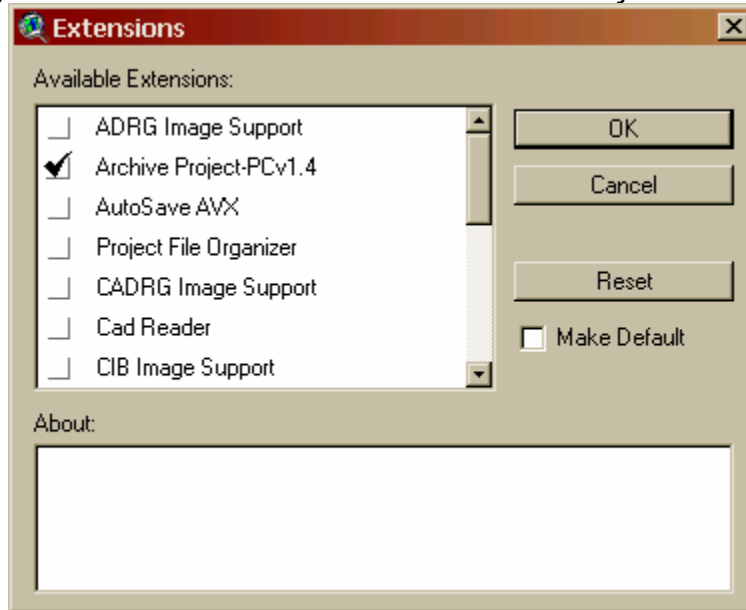
1. Place the archive_project_pc14.avx file in ArcView's Ext32 folder.
(C:\ESRI\AV_GIS30\ARCVIEW\EXT32 for those using MS Windows)

Instructions

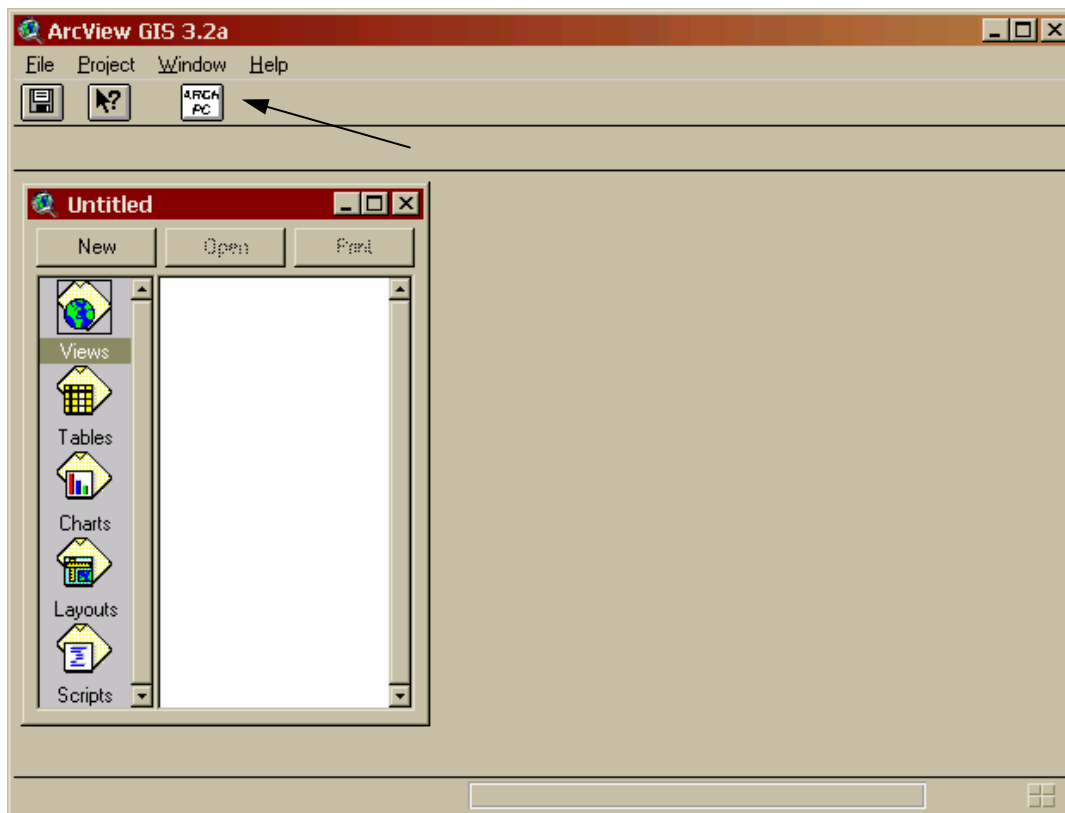
Once you launch ArcView, load your project as you normally would. When you are ready to transfer your project to another directory, highlight the project window.



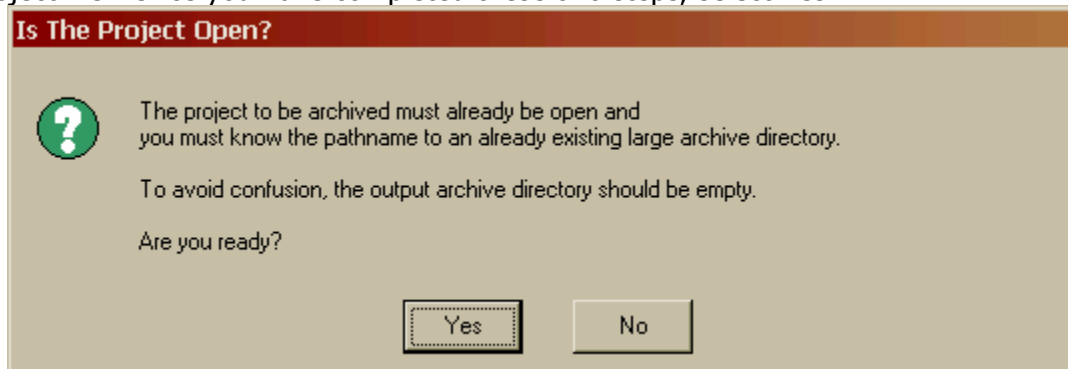
Then go to File>Extensions to activate the Archive Project-PCv1.4 utility.



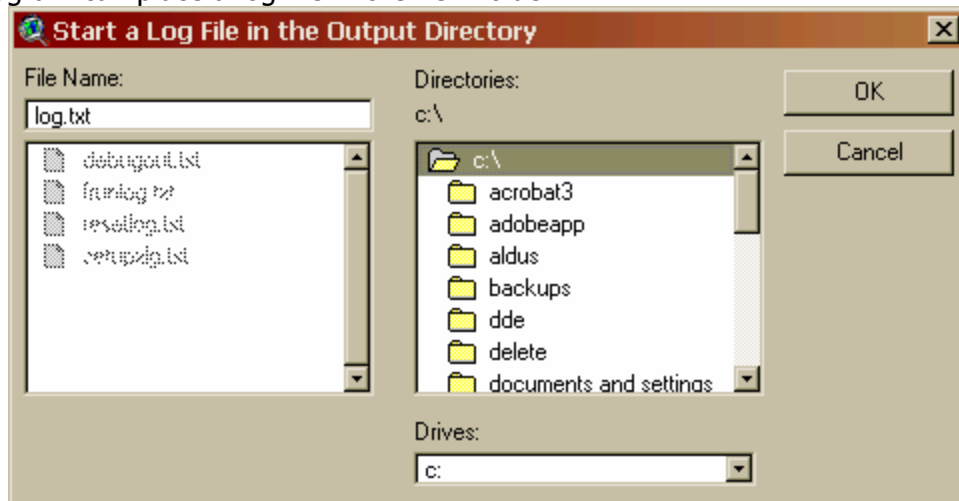
Then, you'll see a white button appear at the top of your toolbar



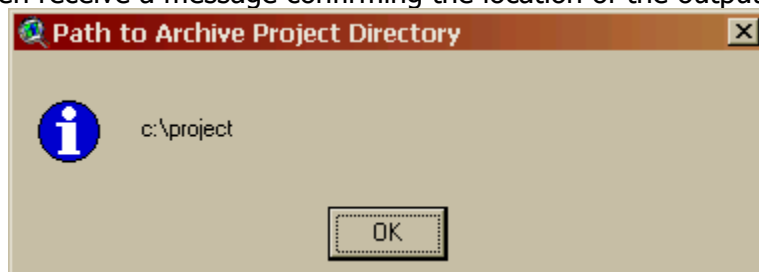
When you push the button, you will receive a message that asks whether you have created a directory for the project to be transferred to and also if you have saved the project file. Once you have completed these two steps, select Yes.



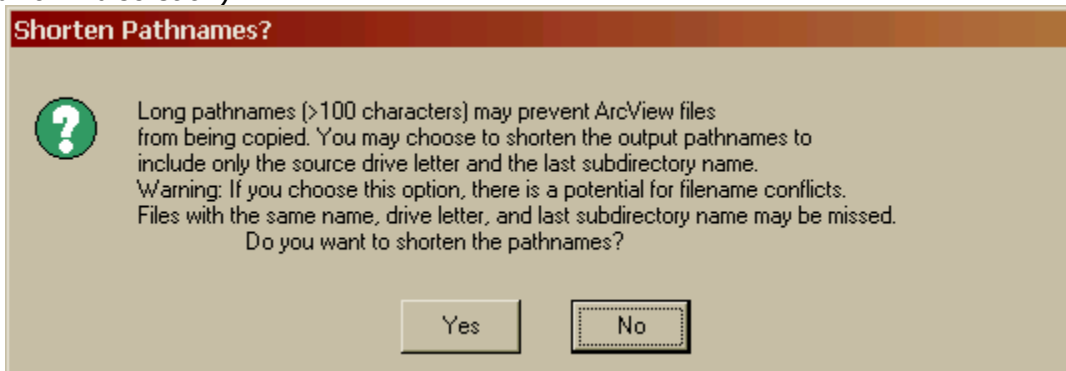
Then, a dialog box will appear and ask you to navigate to the output directory so that the program can place a log file in the new folder



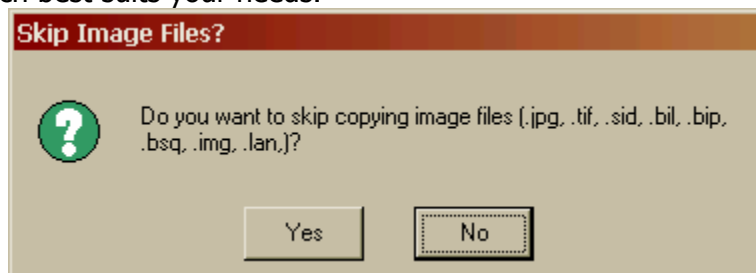
You'll then receive a message confirming the location of the output directory



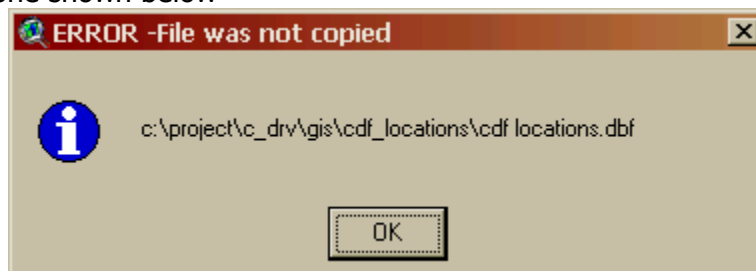
You'll then receive a message box asking whether you would like to have the utility shorten pathnames (it will give you a description of your options, then you may select at your own discretion)



Next, it will ask you if you would like to skip the copying of image files. Again, select the option which best suits your needs.



If any of your files/directories **do** contain spaces, you will receive an error notification similar to the one shown below



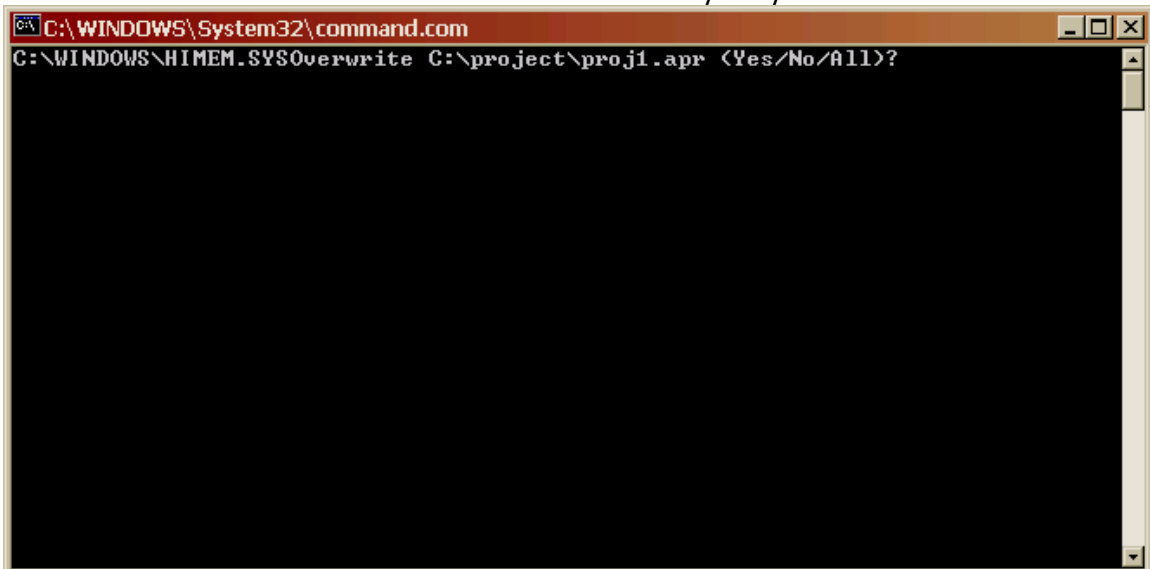
When all files have been processed, a DOS command window should open asking whether you want to copy a Directory or File. Choose "File" each time and "Overwrite" if asked.

Select "F" at this prompt



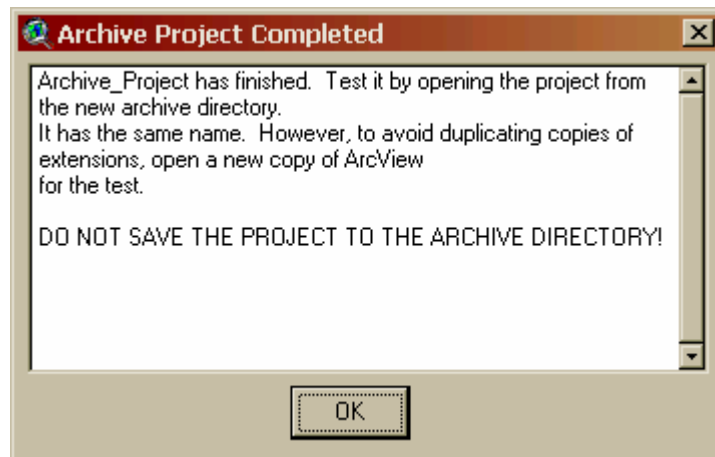
```
C:\WINDOWS\System32\command.com
C:\WINDOWS\HIMEM.SYSDoes C:\project\proj1.apr.old specify a file name
or directory name on the target
<F = file, D = directory>? _
```

Select "Y" to Overwrite at this prompt



```
C:\WINDOWS\System32\command.com
C:\WINDOWS\HIMEM.SYSoverwrite C:\project\proj1.apr <Yes/No/All>?
```

Finally, you'll receive a confirmation dialog box when the operation is complete.



If you have any questions or run into any problems, feel free to get in touch with me:

Peter Salib
Research Assistant
Children's Defense Fund-Ohio
52 East Lynn Street, Suite 400
Columbus, Ohio 43215
614.221.2244 phone
614.221.2247 fax
<mailto:psalib@cdfohio.org>